

Campus Newsletter



The Newsletter of the Aberfoyle Park Primary School Campus - Term 3 vol.2, 2012

In this issue...

Campus Events Committee formed, Music Night, Sustainability and more!

Campus Events Committee

Early in term 3, Campus canvassed feedback from the community via an on-line survey, to ascertain the future of fundraising for the Campus and the Campus Fair. It was decided that the Campus Fair be held every second year, rather than annually, with other community and fundraising activities to be explored in the alternative years. This means that the next Campus Fair will be held in 2014. This decision was ratified by Campus Conference at their last meeting, where they also thanked the Fair committee for their efforts.

In order to facilitate other options for next year, we are calling for volunteers to become involved in a new **Campus Events Committee**. This committee will investigate options for events which have a focus on community involvement, fundraising, or both. If you are interested in becoming involved as a committee member, the next meeting will be held at **7pm on Tuesday 30th October 2012**, in the Campus staff room. This will be a brainstorming session so bring your best ideas.

Show your Campus Card
when you shop at the
Hub Fruit Bowl
10% off everything
(excludes specials & sale items)
Shop 20 Hub Shopping Centre, Aberfoyle Park
8270 4656

Campus Kids Play Cafe



The Campus Kids Play Cafe is open every Tuesday & Friday from 9.30am to 1.30pm during school terms in the Geoff Simpson Hall. Entry is just a gold coin and there's always great coffee & delicious home baked goodies. Come and say "hi" to Jo!

Campus Music Night



Held across two huge nights in the Performing Arts & Media Centre on the 12th & 13th of September, the Campus Music Nights proved to be very successful. Talented performances included singing from choirs, dance and musical numbers by bands, groups and soloists.

Both nights were recorded on DVD and are available for sale at \$10 each night (or \$15 for both DVDs- Wed & Thurs). If you would like a DVD, or maybe a few for family and friends, then see Carol at the Campus office (available early in Term 4). All proceeds assist the continuation of our excellent cross-Campus music program and future music nights.

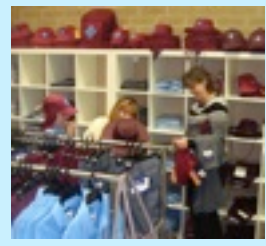
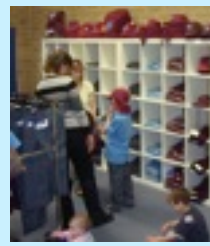
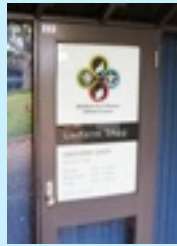
Shop locally and support the businesses that support us!

Show your Campus Card at
Marcellina
Aberfoyle Park
and get **25% off all hot food take-aways**
(excludes drinks & meal deals. Not valid with any other offer)
Aberfoyle Village Shopping Centre, Hub Drive 8270 7333

Check the Campus website for a full list of all Campus Card participating businesses at www.appscampus.sa.edu.au

Campus Uniform Shop

Located between the Library and the Campus Office, the Uniform Shop is open
Monday 2.30 to 3.30pm
Wednesday 8.30am to 9.30am
Friday 8.30am to 9.30am



Woolworths Earn & Learn



The Woolworths Earn & Learn sticker campaign is over for this year. Thanks to everyone who returned their sticker sheets to school. Together as Campus we have about 8 times the amount raised in 2011 and that equates to around **\$7,500** worth of items we would not otherwise have been able to afford. These goods include sustainability products, musical instruments and early learning/educational support items.

Campus Sustainability

Shop locally and support the businesses that support us!



"Cans for Campus"



Spring is sprung

The Campus Sustainability garden is gearing up for great spring weather. Students have already planted out a range of vegetables that have yielded some bumper crops, and more is on the way. We've planted some new stone-fruit trees (already blossoming) and the veggies include, onions, lettuce, spinach, carrots and more.

Students recently harvested some spinach to make some healthy spinach and cheese triangles in time for lunch!



Campus recently purchased a fleet of brightly coloured orange recycle bins as part of the "Cans for Campus" initiative. Students can now bring their cans and plastic bottles from home, place them in the orange bins and school recycling monitors will deliver them to the sub-depot in the garden. Already we have earned **\$131** from this program and saved this waste from going to landfills.



Gym for hire



Campus Gymnasium

The Campus gymnasium is a great place to conduct indoor sports and it's available for short term or on-going hire after school or on the weekends.

The gym can be used for weekend sports events such as Karate, Judo or Tae-Kwan-Do trials and championships. Or maybe basketball, badminton or wrestling clubs might like to train in the gym. Whatever the indoor sport practice, training sessions or award presentations, the Campus gym might suit your club. The hire fee is extremely cost effective, so call the Campus office on **8270 3077** to find out more and make a booking.

The Campus Newsletter is proudly produced by the Campus Development Officer - Philip Elms

Volunteers Wanted

"Campus Kids" Play Cafe is looking for eager volunteers to assist each Tuesday and Friday. Both Cafe duties and people with Early Childhood training are required. If you are interested, please contact Philip on **8270 3077**.

